

BEDFORD MACHINE AND TOOL, INC.

2103 JOHN WILLIAMS BLVD.

BEDFORD, IN 47421

812-275-1948

WWW.BEDFORDMACHINE.COM

COMPANY OVERVIEW



Quality Policy:
Committed to total customer satisfaction
from a customer point of view.



What Bedford Machine and Tool Can Offer Your Company

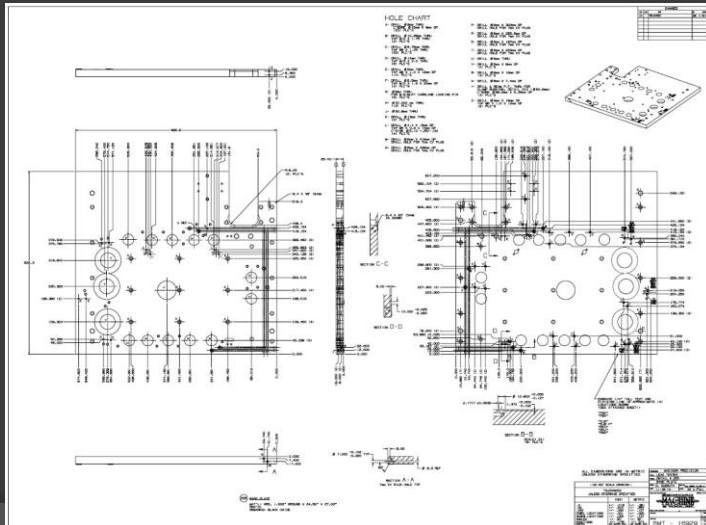
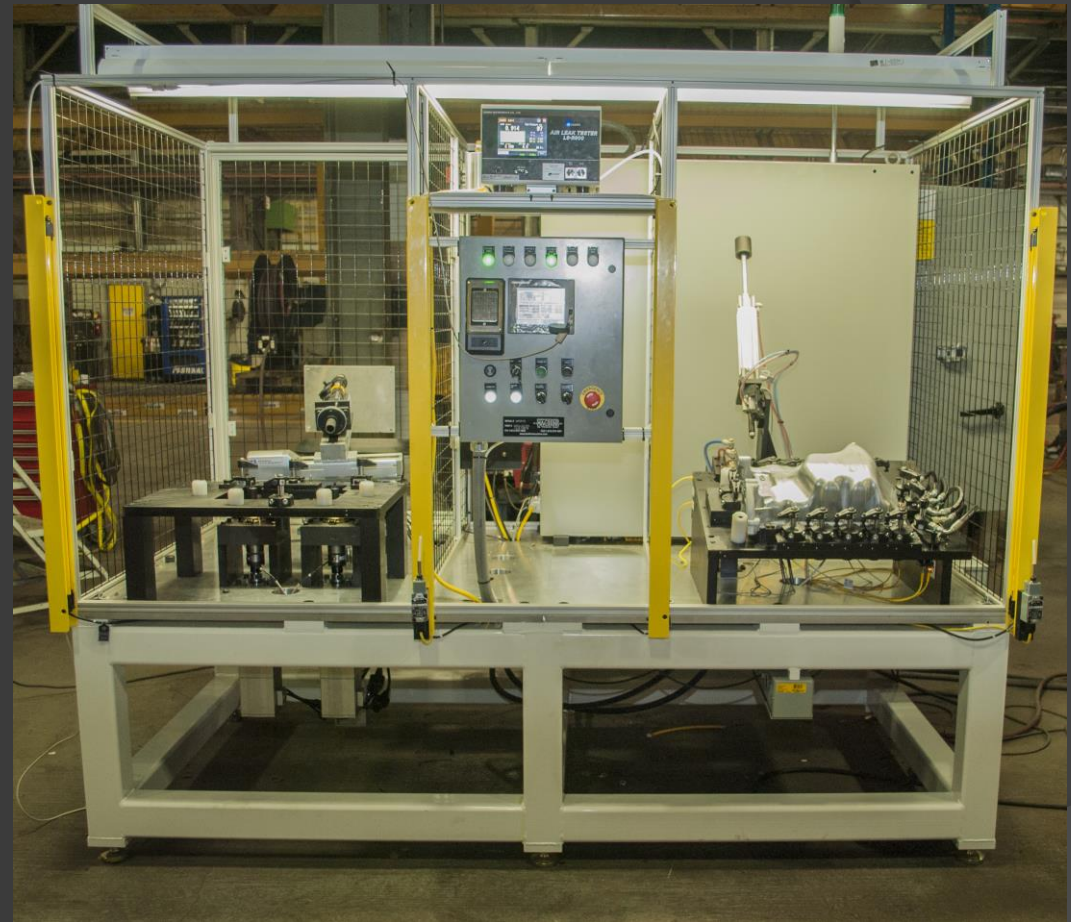
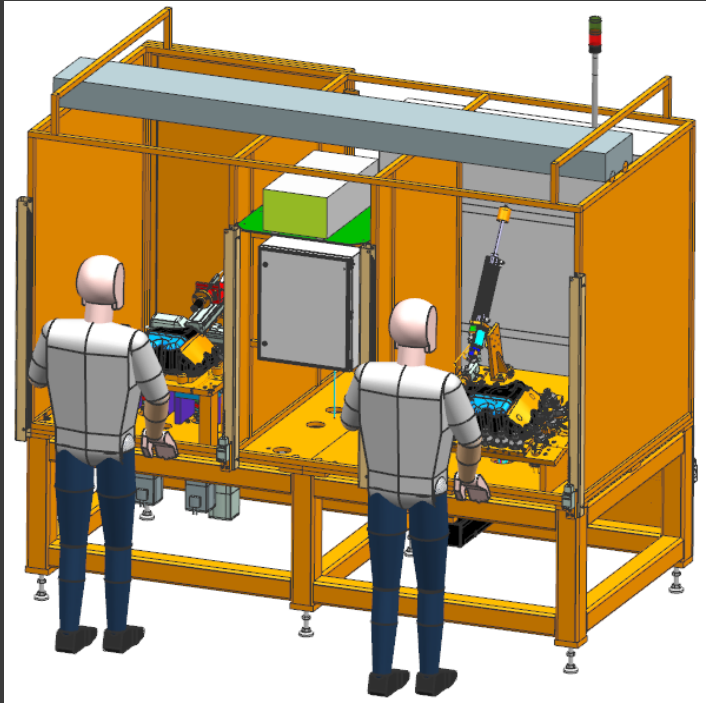
- Large machining capacity.
- Manufacture of custom designed machinery.
- Die cast mold manufacturing, refurbishment, repair, and assembly.
- Fabrication of large and small components.
- Machining of large and small components.
- Mechanical and Electrical Engineering.
- Quality Inspections for parts large and small.

Large Machining Capacity



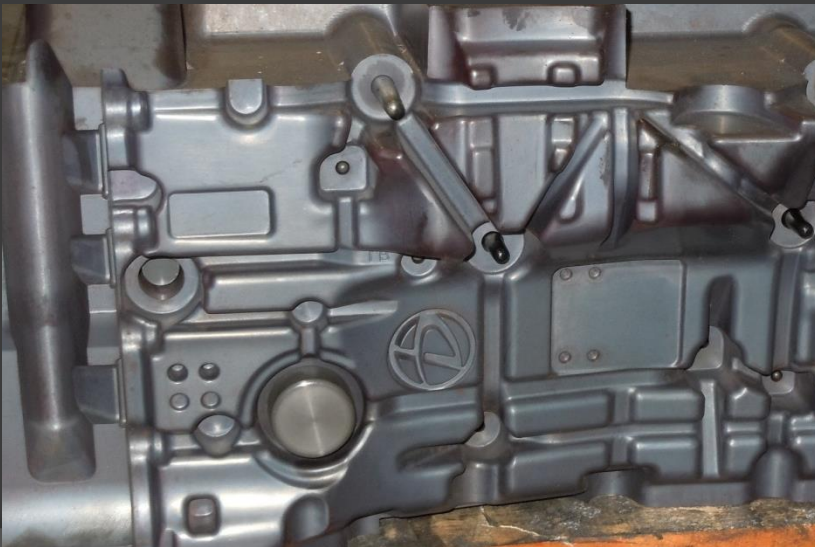
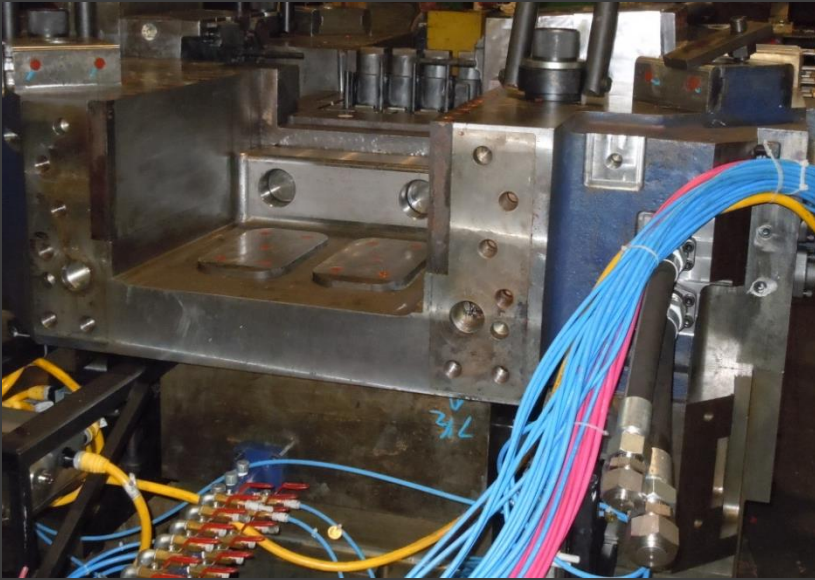
Open floor space and 35 ton lift capacity infrastructure to support large product manufacturing

New Equipment Design and Manufacturing



Custom engineering solutions

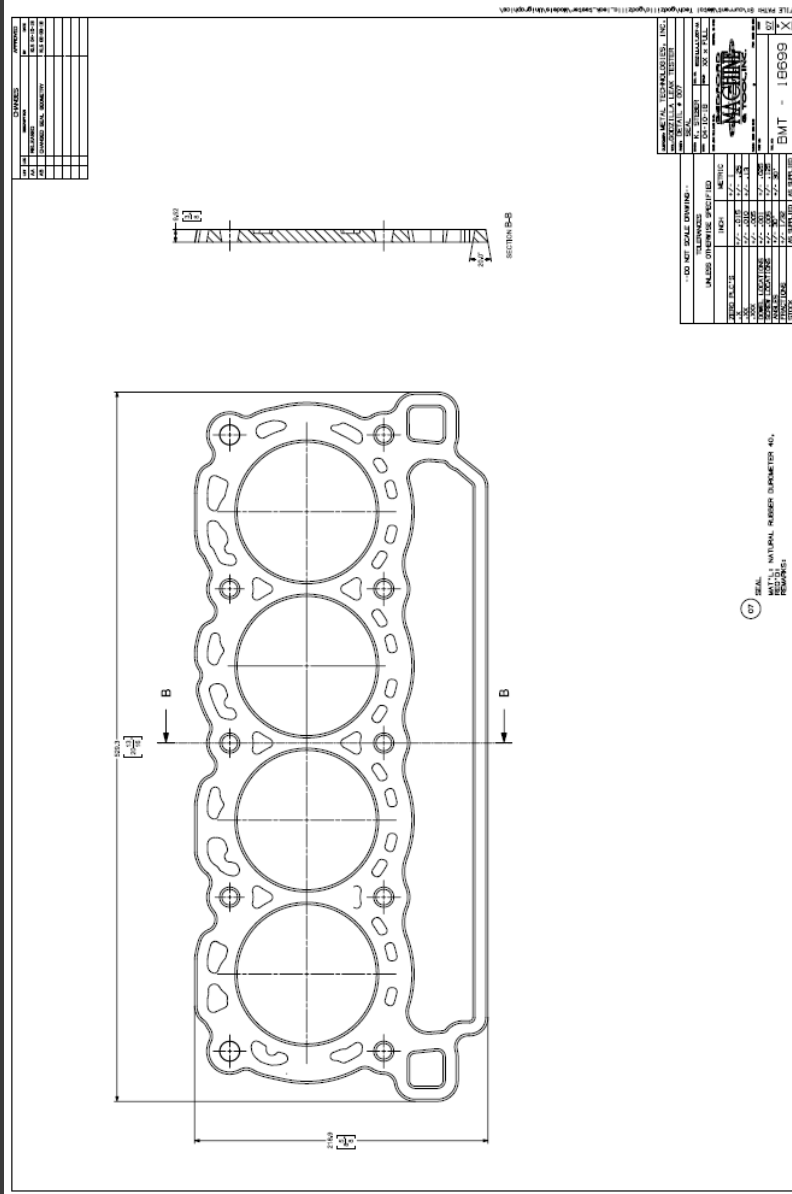
Die Cast Mold Repairs, Manufacturing, & Refurbishment



Fabrication & Powder Painting

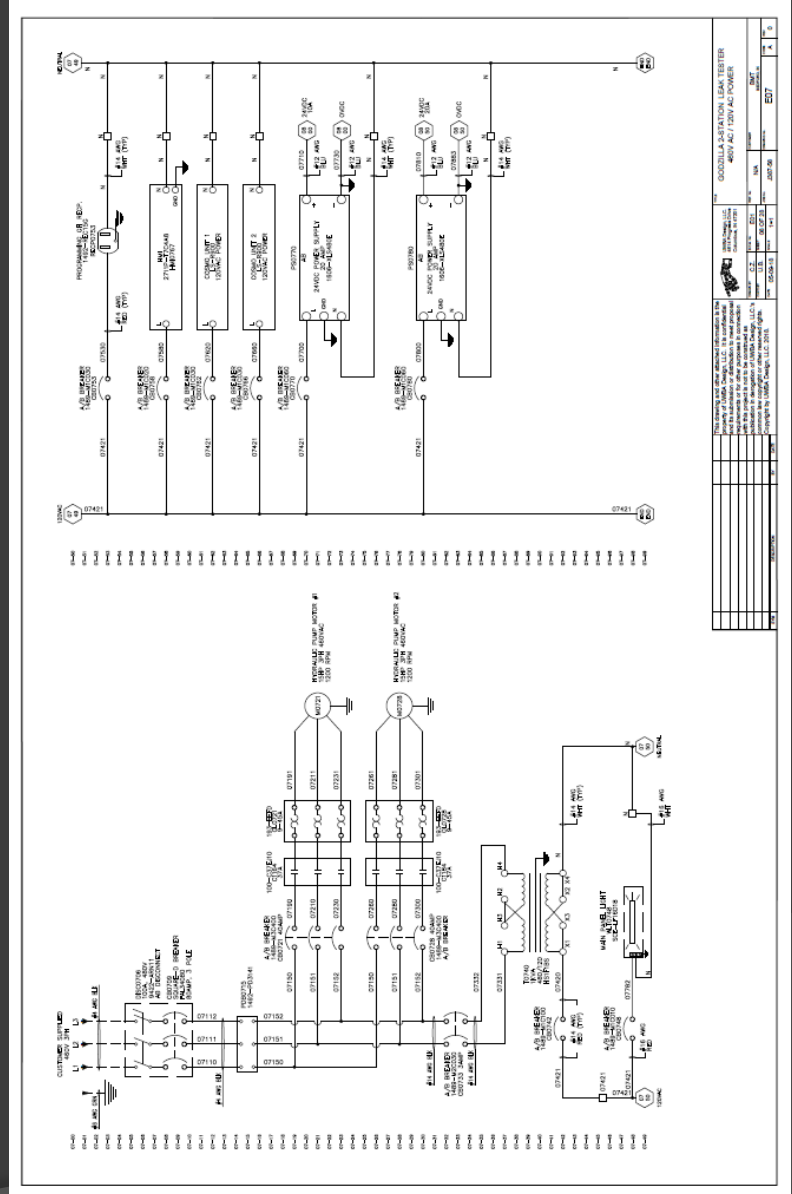


Mechanical & Electrical Engineering



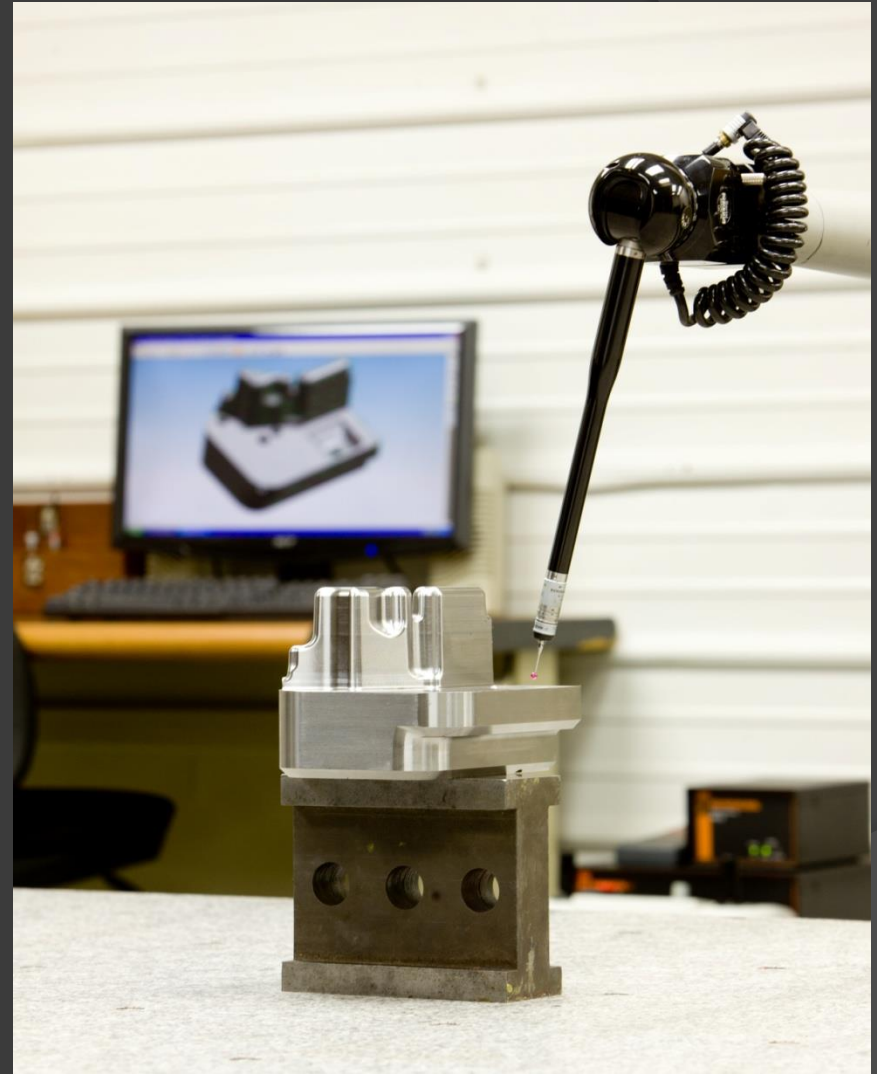
Unigraphics

Bedford Machine & Tool, Inc.



AutoCAD

Quality Inspections – Large & Small



ISO 9001:2015 Certified

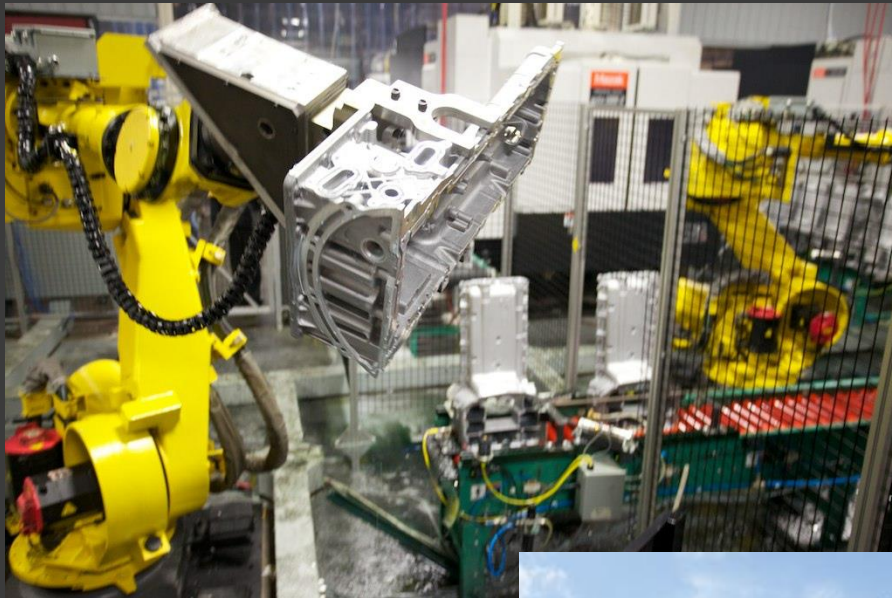
Bedford Machine & Tool, Inc.



Metal Technologies Inc.

Metal Technologies is a production machining facility that specializes in high and low volume, close tolerance machining, and leak testing of aluminum castings.

Metal Technologies uses the latest in computer controlled technology to produce your products.



ISO 9001:2015 Certified.



IATF 16949 Certified.

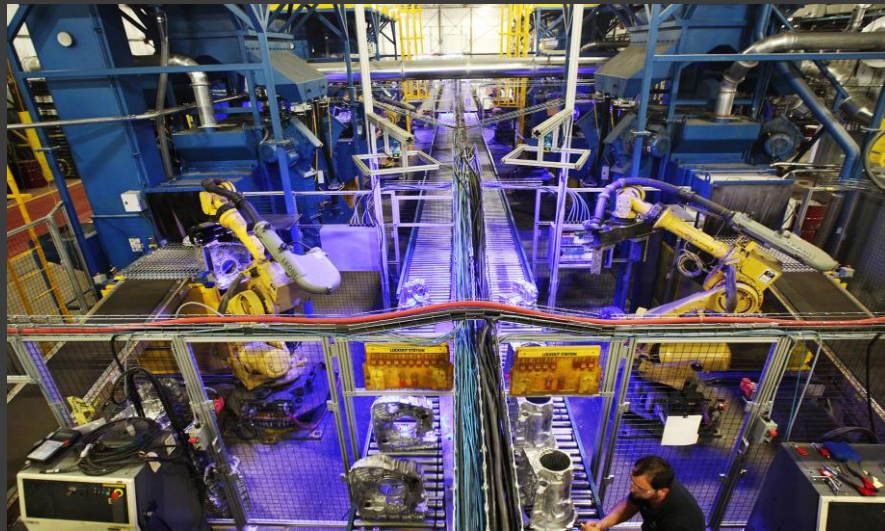


CAP Group and Bedford Recycling



CAP Group LLC specializes in aluminum casting trimming and shot blasting.

Multiple fully automated lines run in conjunction with manual trim cells to produce 12,000 parts per day.



ISO 9001:2015 Certified.

Bedford Recycling strives to be a valuable asset to our customers, our community, and our planet. As a buyer and seller of scrap metals, we serve a wide variety of customers including the community, the military, and industrial customers.



ISO 9001:2015 Certified.

Over 450 employees combined at all divisions