

BEDFORD MACHINE AND TOOL, INC.

2103 JOHN WILLIAMS BLVD.

BEDFORD, IN 47421

812-275-1948

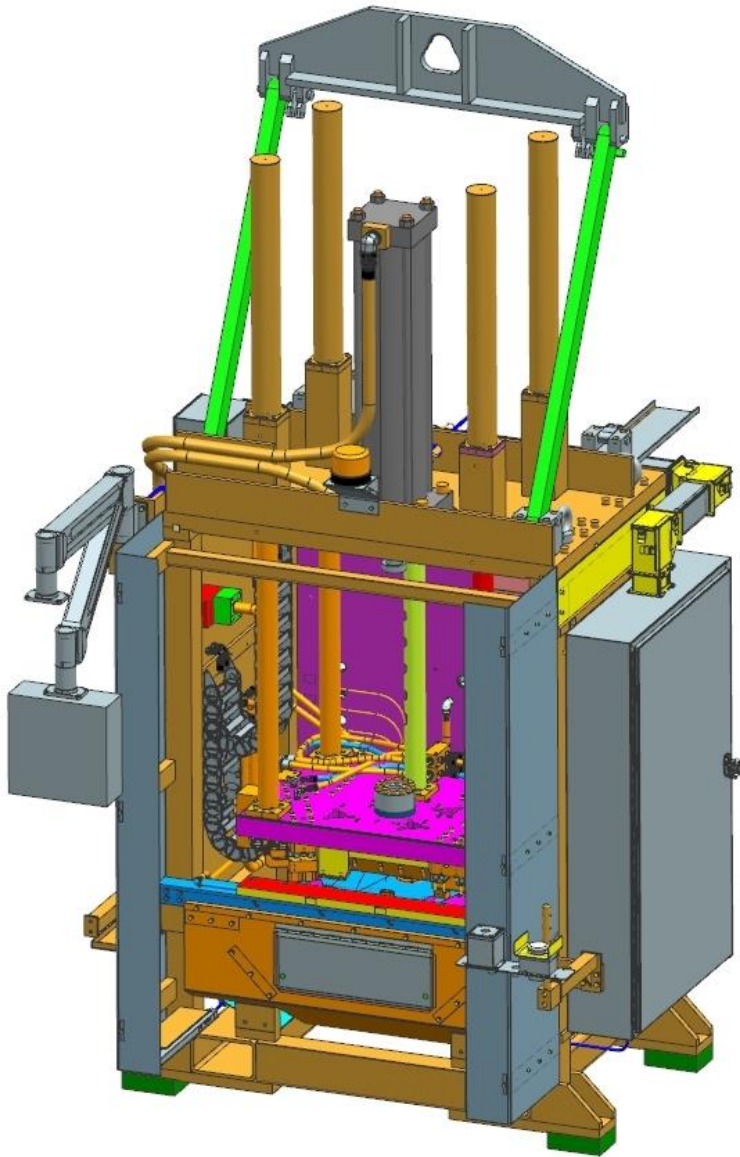
WWW.BEDFORDMACHINE.COM

MACHINE DESIGN & MANUFACTURING AUTOMATION EQUIPMENT ENGINEERING

- Mechanical and Electrical Engineering
- Manufacturing of new custom equipment
- Panel building, upgrades, and installation
- In house run-off & testing
- CAD simulations
- Facility layouts & planning
- Turn key systems
- On-site installation



New Equipment Design and Manufacturing



3D CAD Design

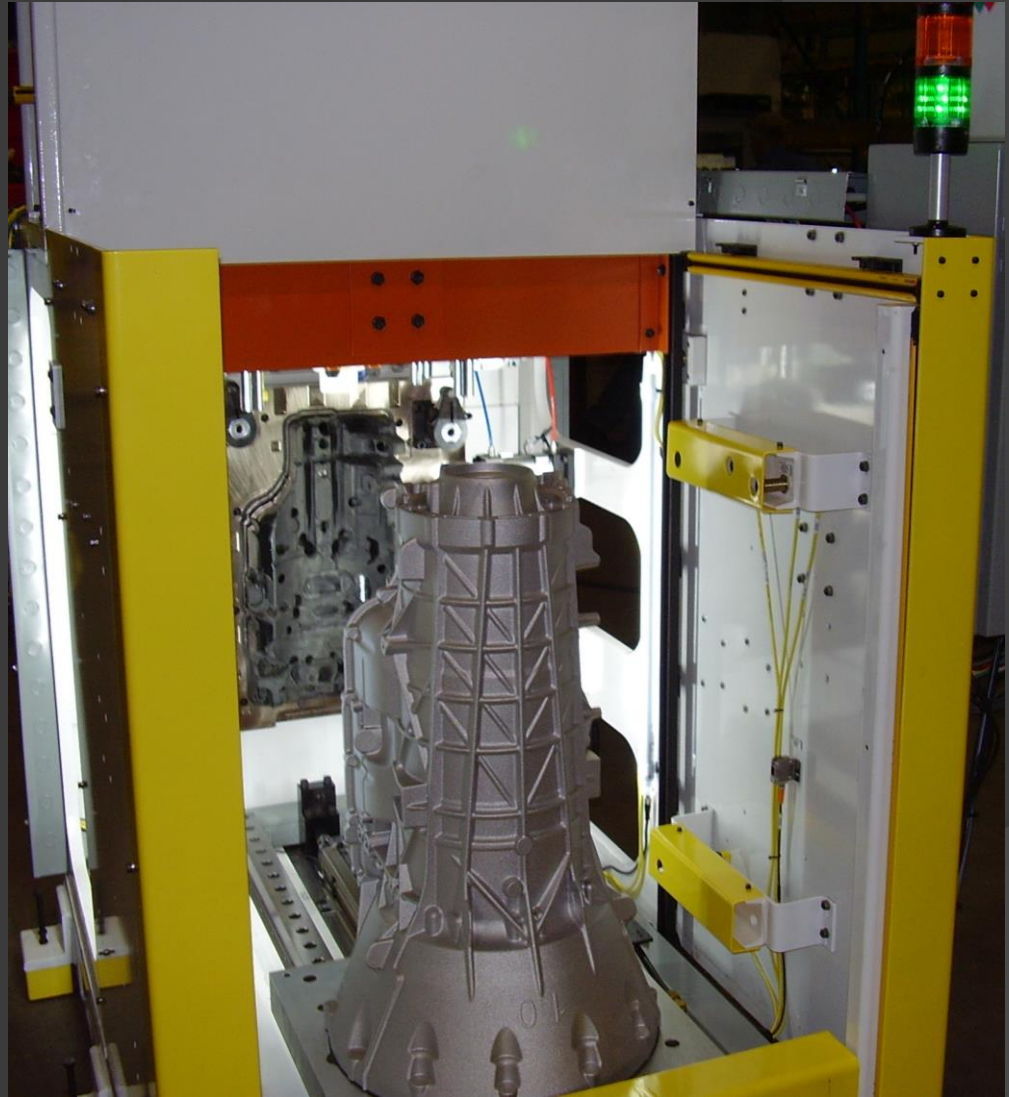


To Finished Product

Manufacturing, Assembly, and Run-off



Dunk Style Leak Testers

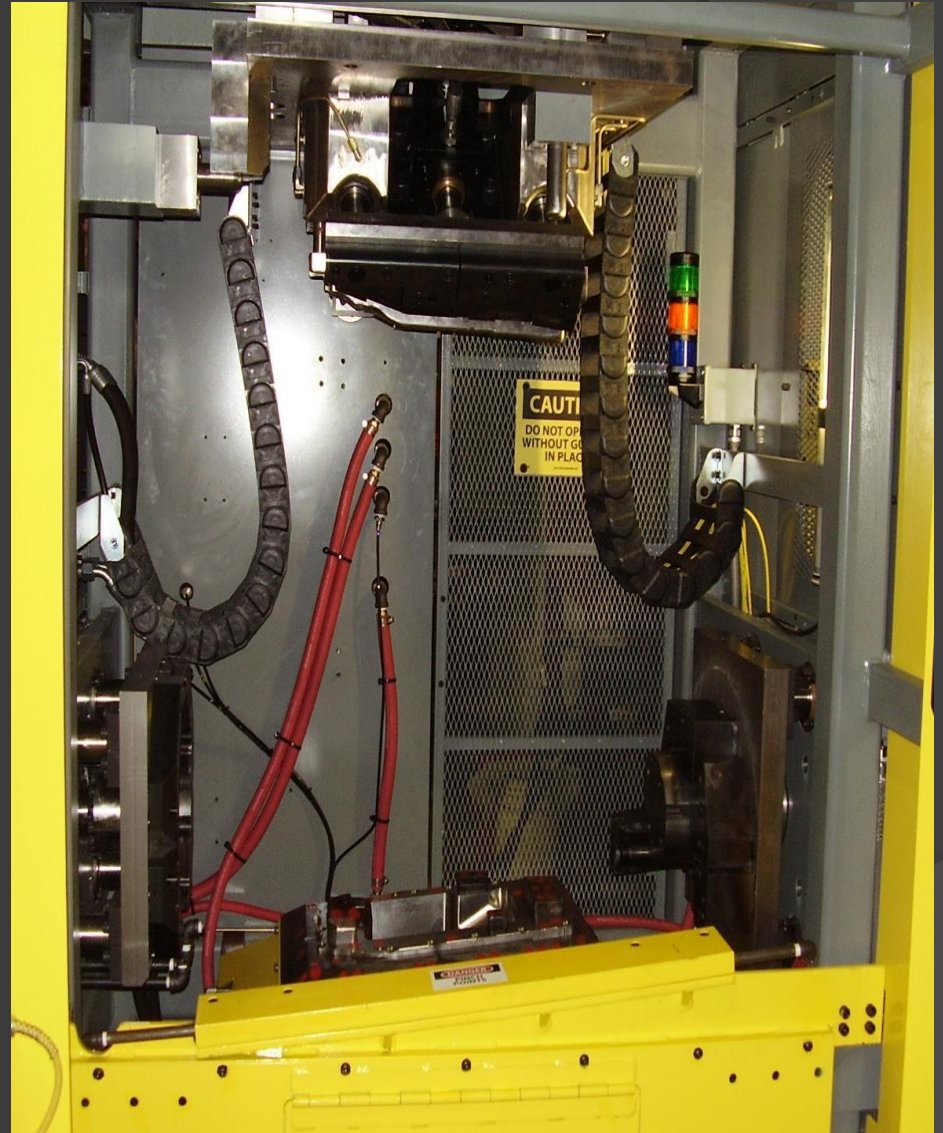


Air Decay Style Leak Testers

Manufacturing, Assembly, and Run-off

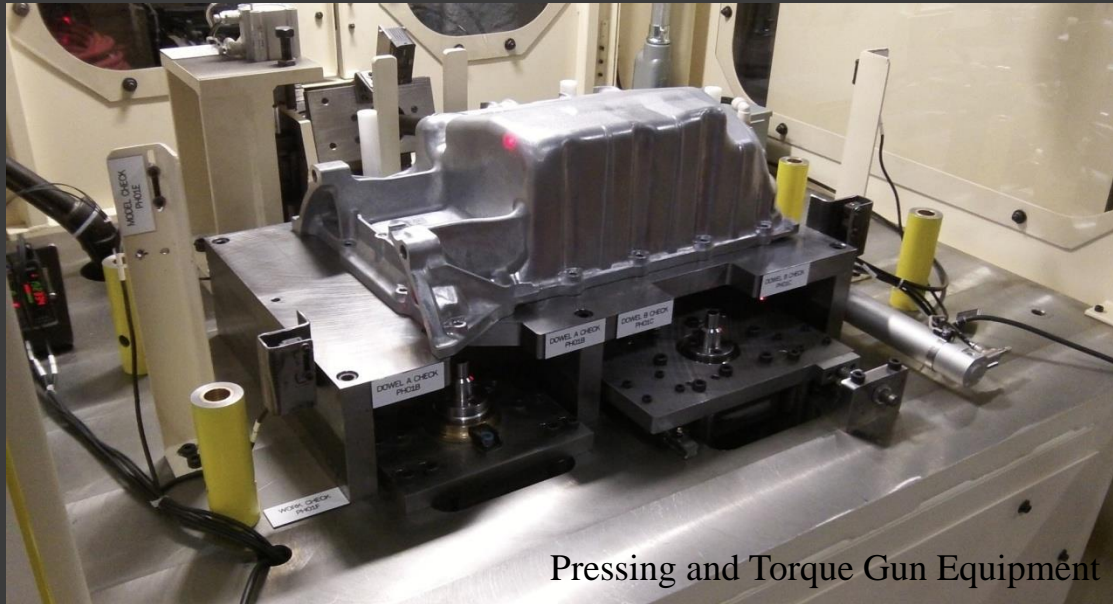


Leak Test and Assembly Equipment

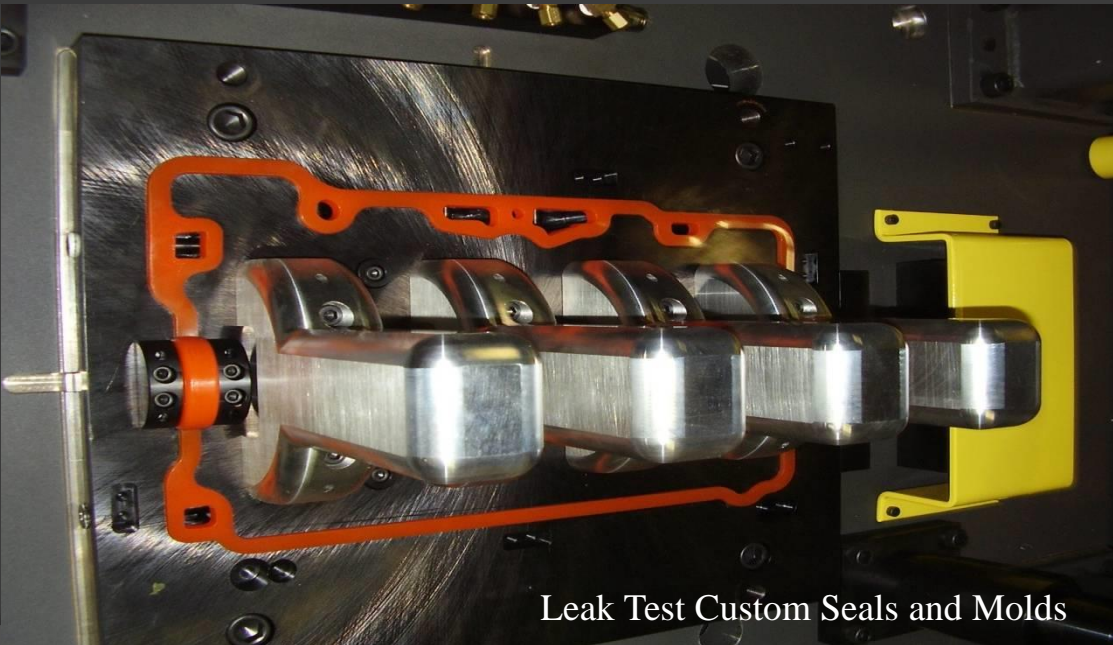


Trim Press Equipment and Tooling

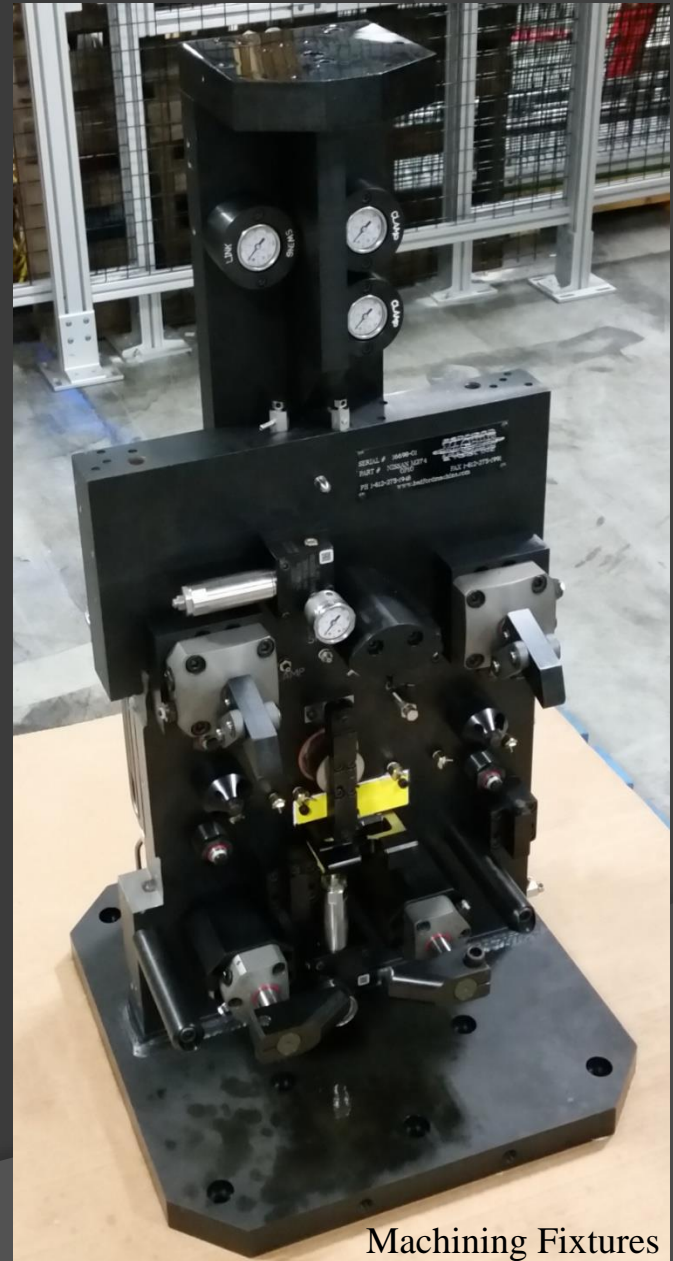
Manufacturing, Assembly, and Run-off



Pressing and Torque Gun Equipment

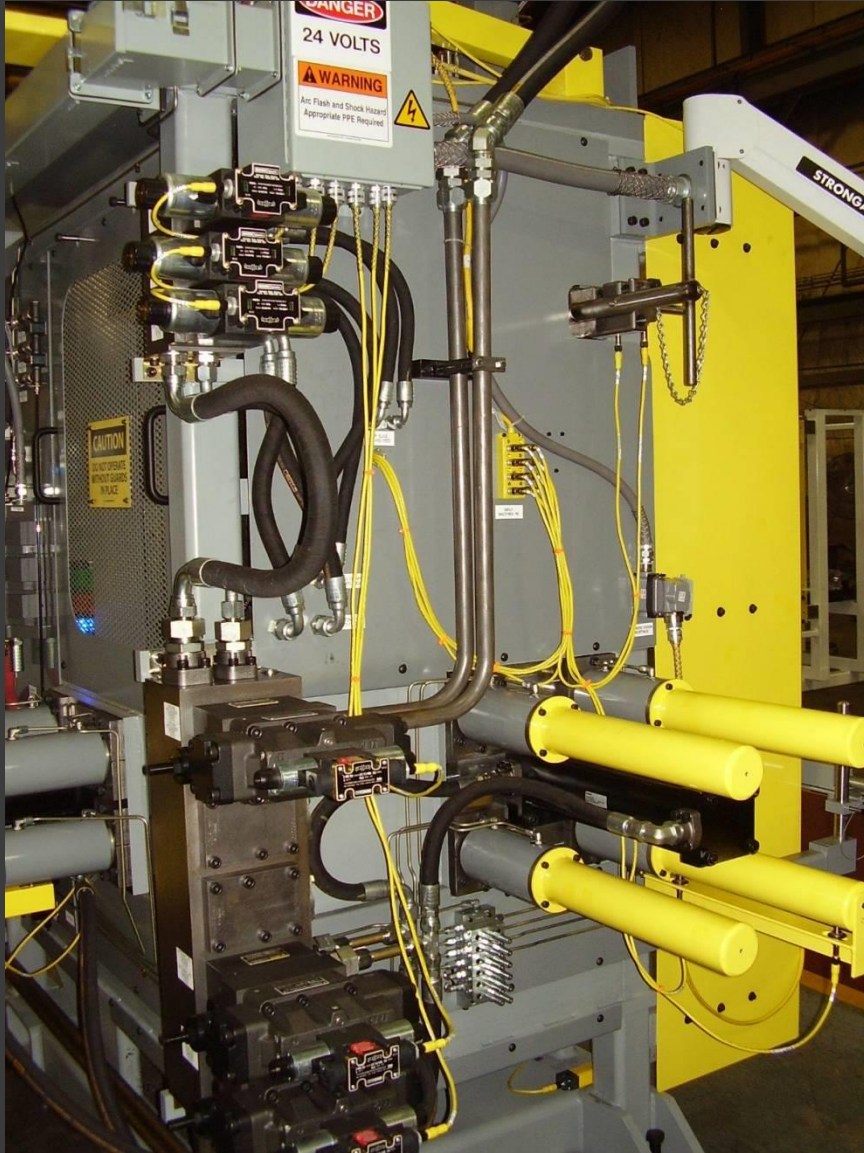


Leak Test Custom Seals and Molds

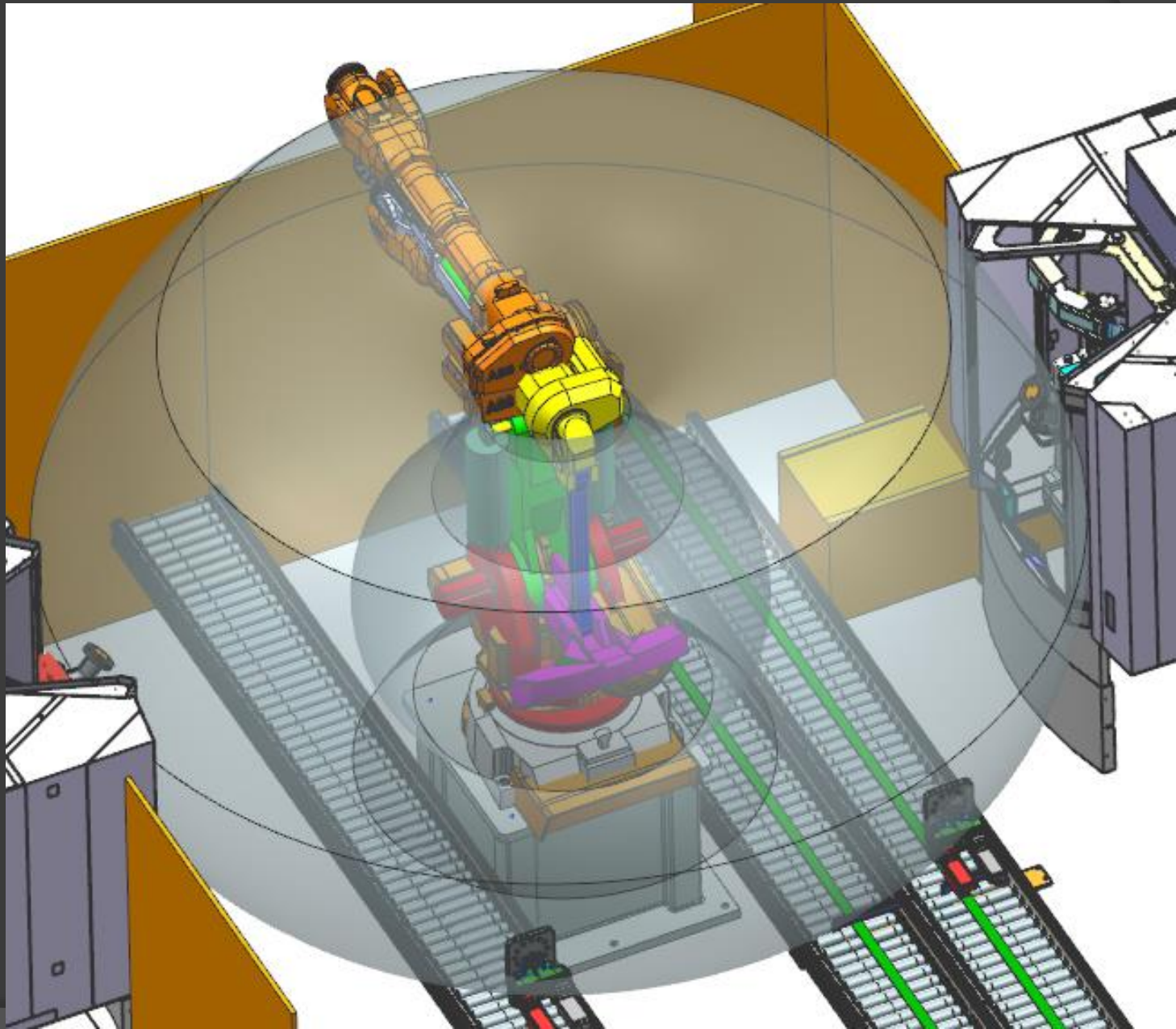


Machining Fixtures

Hydraulics, Pneumatics, Lubrication

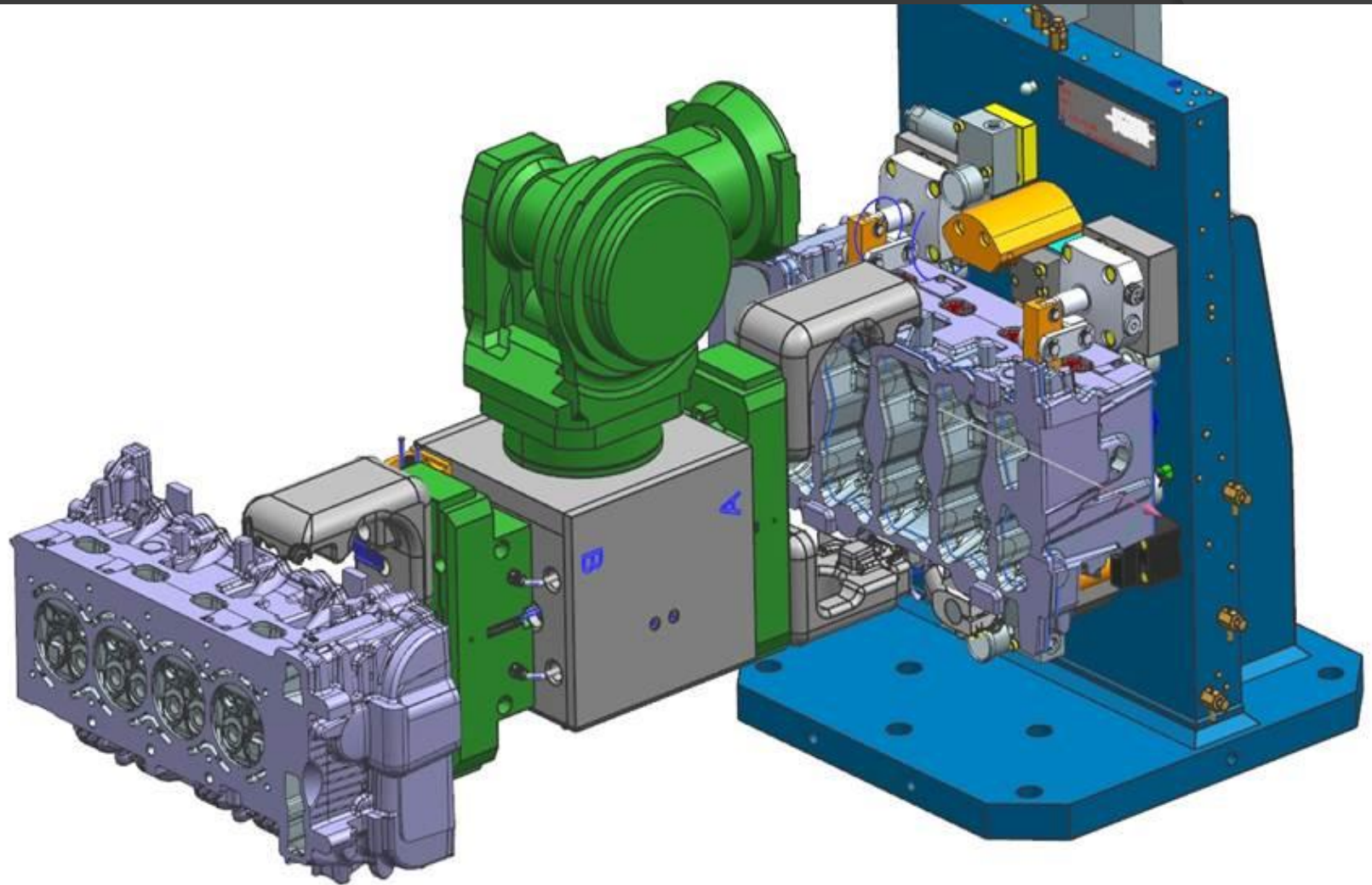


3D CAD Work Cell Layout

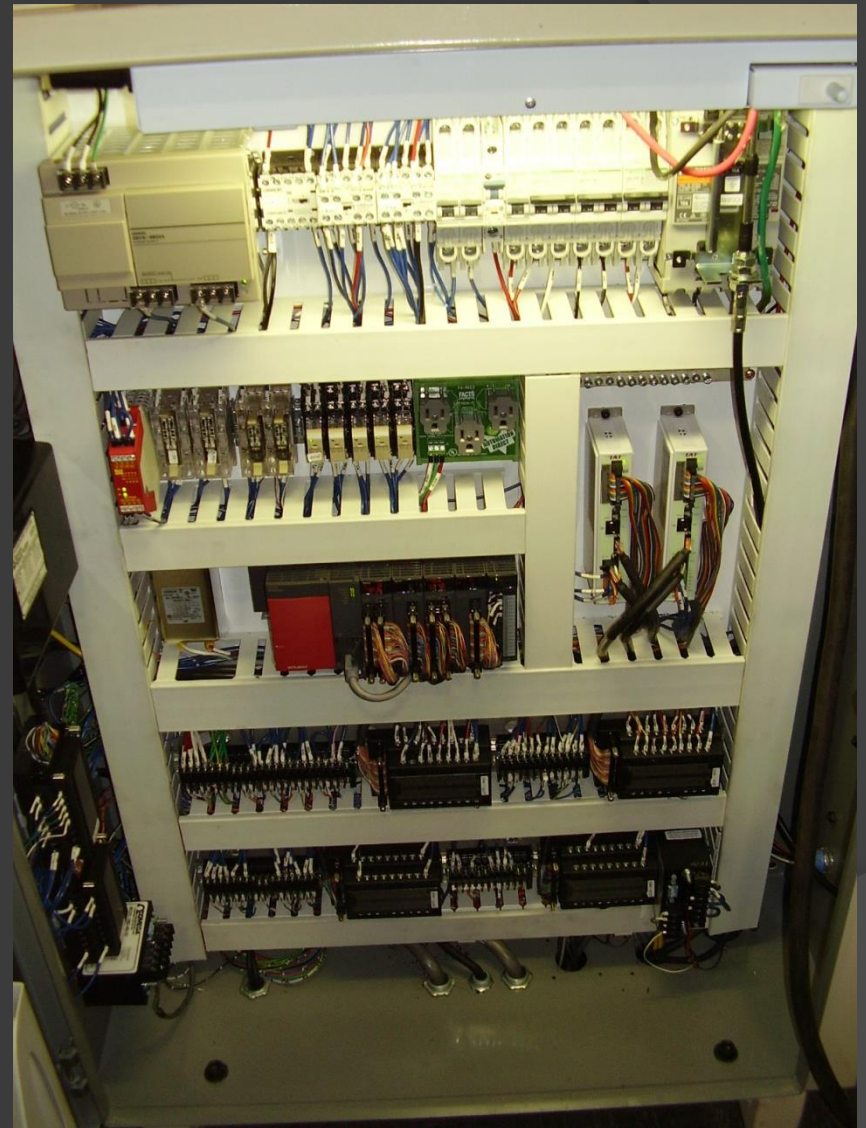
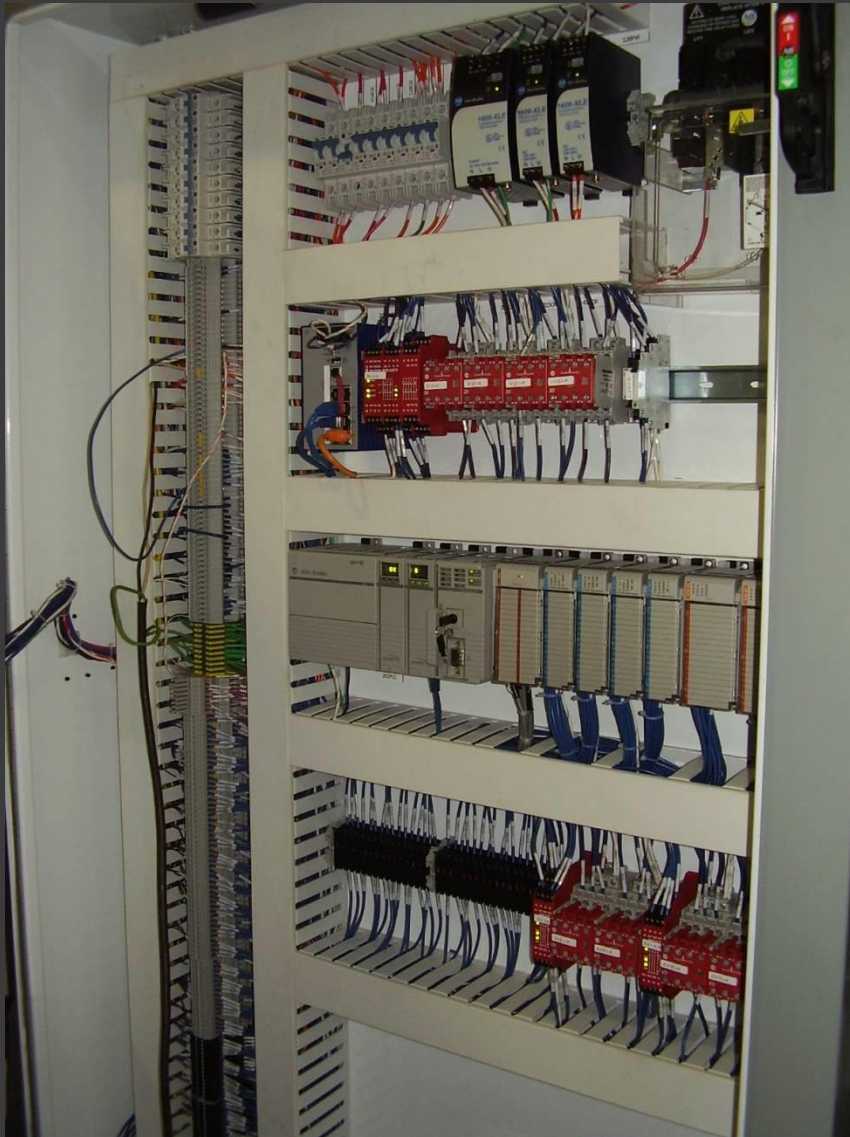


Bedford Machine & Tool, Inc.

3D CAD Simulation



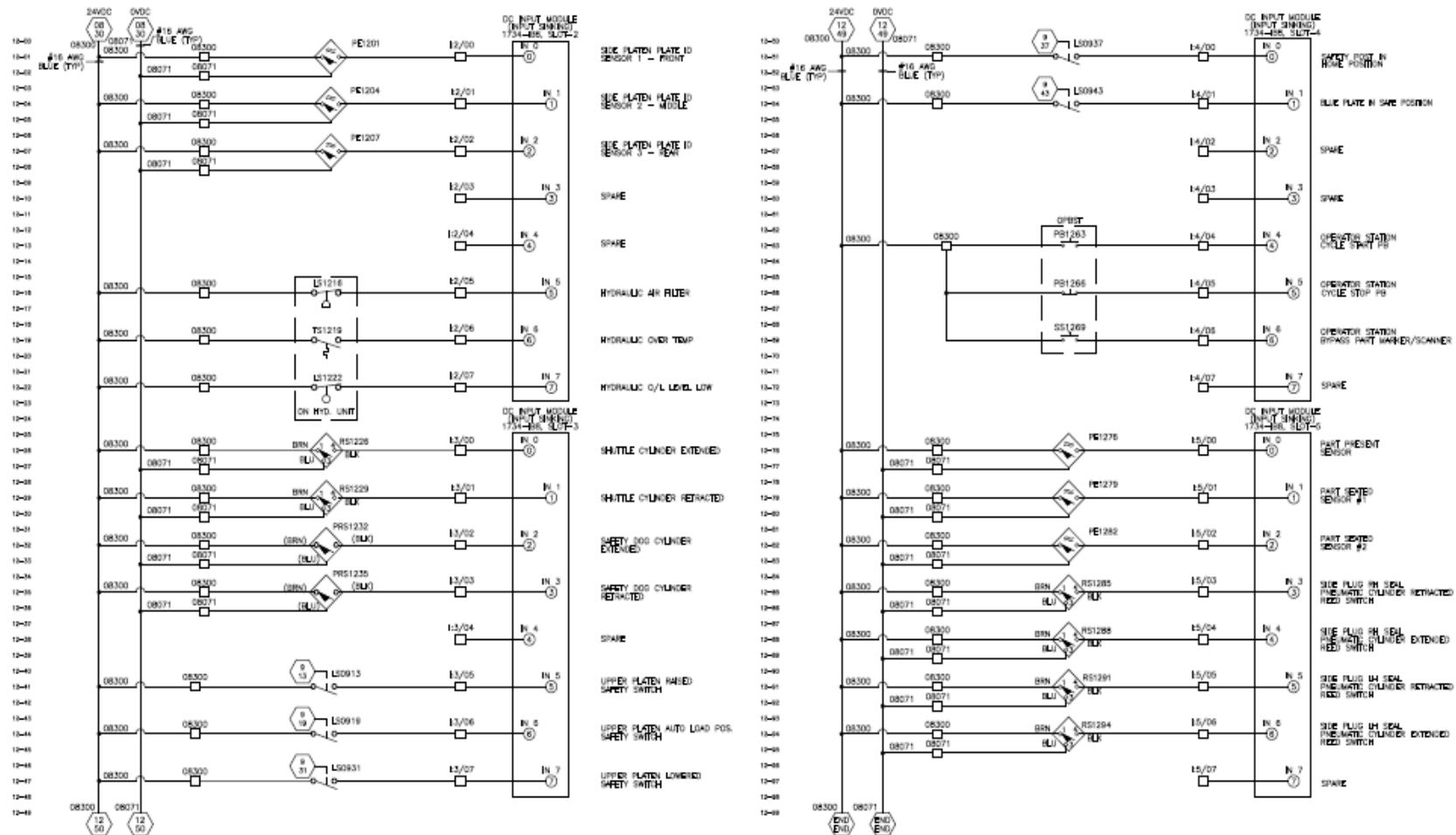
Electrical Controls and Panels



Custom built panels, installation, and upgrades

Bedford Machine & Tool, Inc.

Electrical Schematics & PLC Programming



This drawing and other attached information is the property of UMBA Design, LLC. It is confidential and its submission or distribution to reveal proper requirements or for other purposes in connection with this project is not to be construed as publication in derogation of UMBA Design, LLC's common law copyright or other reserved rights. Copyright by UMBA Design, LLC. 2018.				UMBA Design, LLC 1011 S. Progress Drive Columbus, IN 47201			
Drawn by	C.T.	Rev.	001	Checked by	N/A	Designed by	DMT
Scale	1:1	Date	05-15-2018	Project	001-58	Sheet	E12
Of	1	Of	1	Of	1	Of	1

The diagram illustrates a complex manufacturing layout with the following key features and labels:

- Top Section:**
 - DP10 ATTR GAGE
 - (MACHINE OPS. REJECT CONV.) (THIS CONVEYOR TO PASS UNDER INBOUND-WASH. CONV.) (30" WIDE-X 120" LG.)
 - DP10
 - ROBOT #8
 - DP20
 - DP30
 - RP
- Central Section:**
 - WASTE TOTE
 - WASH
 - CAMERA STAND
 - PIN MARKER
 - PART SCANNER
 - EXTRA CASTING RACK
 - leak tester
 - reject conveyor
- Bottom Section:**
 - DUNNAGE CAP STORAGE
 - 30' x 40' x 120" Storage
 - 30' x 40' x 120" Storage
 - 30' x 40' x 120" Storage
- Other Labels:**
 - WASTE TOTE
 - WASH
 - CAMERA STAND
 - PIN MARKER
 - PART SCANNER
 - EXTRA CASTING RACK
 - leak tester
 - reject conveyor
 - 30' x 40' x 120" Storage
 - 30' x 40' x 120" Storage
 - 30' x 40' x 120" Storage

Freight, Rigging, and Installation



Bedford Machine & Tool, Inc.